

# Alaska Department of Fish and Game

Habitat Section  
Southeast Region



## 186-15-10550-2005-3022-4018 Tributary 2

## ADDITION

**Water body name:**

**Survey date:** 8/20/2024

**Quad:** Icy Bay D2, D3

**Species & Lifestage:**

**Upper Reach Latitude:** 59.985040 **Longitude:** -141.541434

**Survey crew:** NJ, CD, FC

**Lower Reach Latitude:** 59.984666 **Longitude:** -141.541979

**Findings:** We surveyed this uncataloged stream using a backpack electrofisher and GPS and captured juvenile coho salmon. The streambed is comprised of mostly fine organic material and leads up through an open wetland area with ponded water. The stream channel continued past the pond but quickly dried up; likely connects to additional ponds further upstream during high water (Table 1; Figures 1–3).

**Recommendations:** Add this uncataloged stream to the anadromous waters catalog for rearing coho salmon (Figure 4).

**Nomination:** Pending

Table 1.—186-15-10550-2005-3022-4018 tributary 2 survey data.

Waypoint	Latitude	Longitude	Notes	Stream Width ft	Stream Substrate	Habitat Features	Gradient %	Sample Effort	Sample Results
1051	59.984717	-141.541824	CO caught and VID in main mapped channel. Another tributary enters here on river left, looks fishy and will need to investigate. Continuing up main channel.				2-4	EF	2 CO
1054	59.985043	-141.541456	Tributary opens up into muskeg area with many Coho visually seen in standing water. Water channelizers just downstream of standing water and enters tributary that continues down and enters the main mapped channel.		Fine Organic		1-2	EF	3 CO
1055	59.984915	-141.541463	This tributary narrows up from where the ponded water enters and becomes approximately one to one and a half foot wide with a mild gradient. Seems like good fish habitat continuing on this small channel.		Sand Small Gravel		1-2	VI	4 CO
1056	59.985134	-141.5410495	Small channel continues through wetland area and ends up in small ponded water. Water ends here.		Fine Organic		1-2	EF	No Fish



Figure 1.—Juvenile coho salmon caught at waypoint 1054.



Figure 2.—Upstream at waypoint 1054.



Figure 3.—Upstream at waypoint 1056.

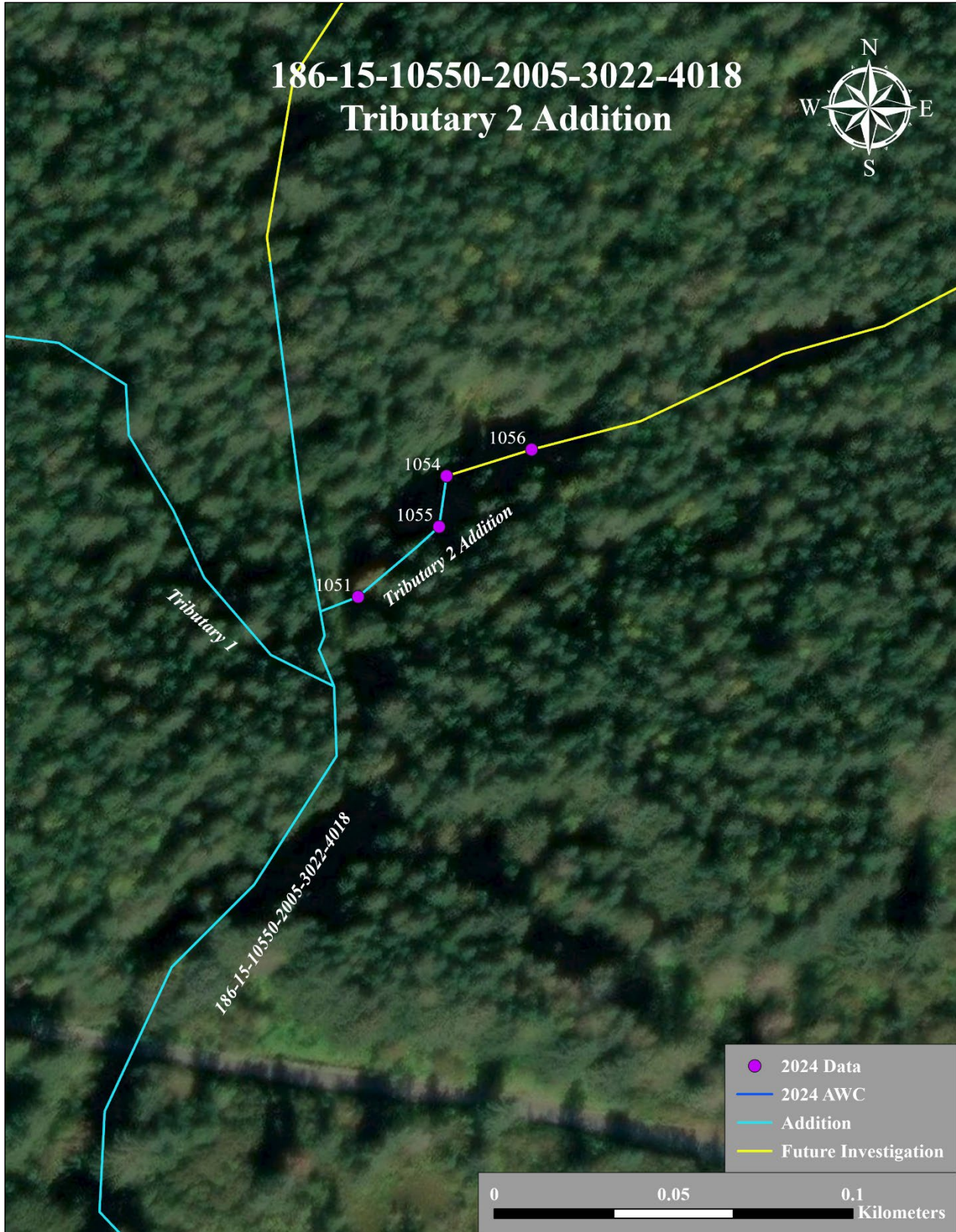


Figure 4.—186-15-10550-2005-3022-4018 tributary 2 addition map.